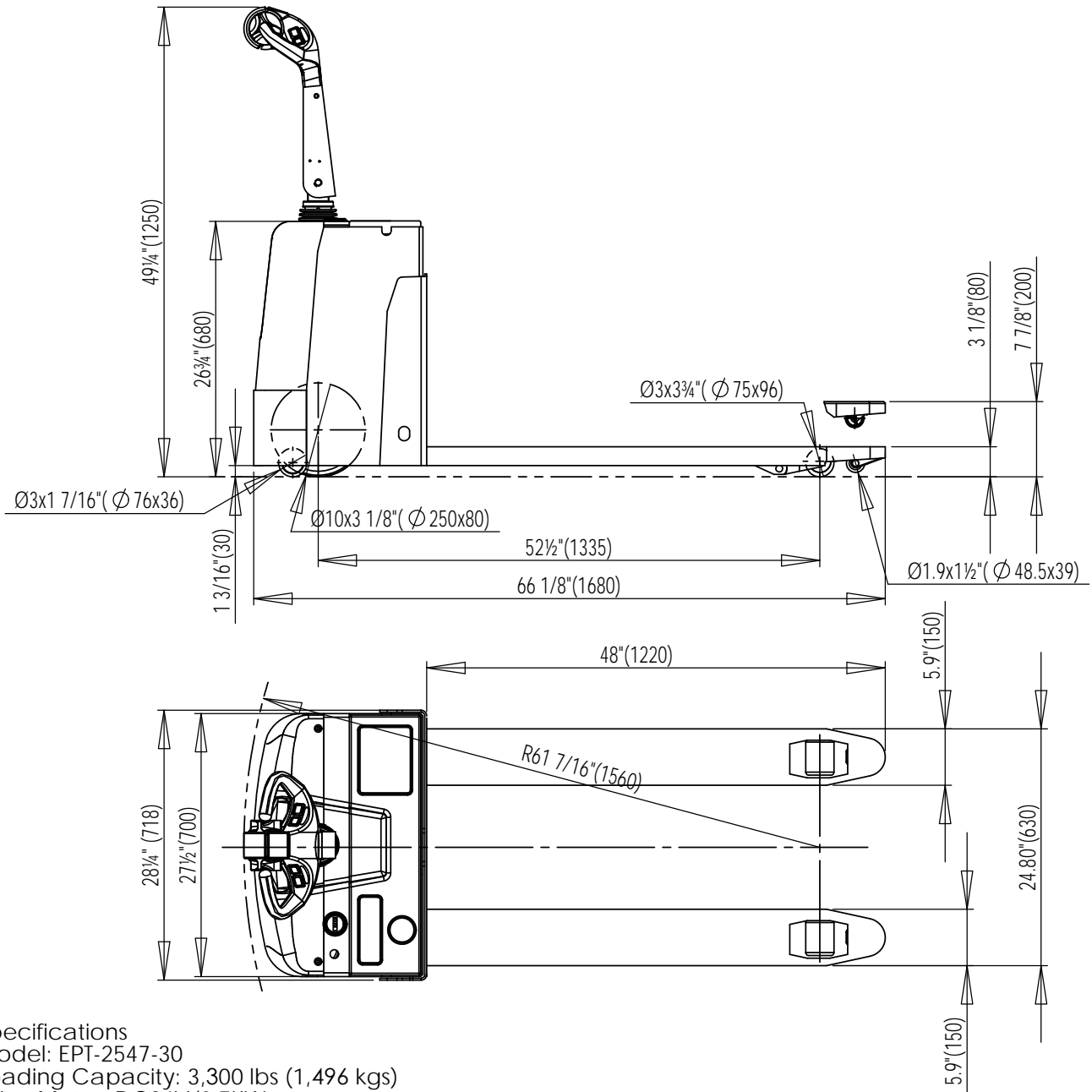


## EPT-2547-30 (3,300 lbs ELECTRIC PALLET TRUCK)



### Specifications

Model: EPT-2547-30  
 Loading Capacity: 3,300 lbs (1,496 kgs)  
 Drive Motor: DC24V/0.7KW  
 Lift Motor: DC24V/1.3KW  
 Controller: CP2207A-5102  
 Handle: CH-2  
 Battery: 2x12V/85-95Ah  
 Battery Charger: 24V/12amp  
 Lifting Speed without Load: 1.57"/sec  
 Lifting Speed with Load: 1.37"/sec  
 Down Speed without Load: 1.18"/sec  
 Down Speed with Load: 1.57"/sec  
 Travel Speed without Load: 3.4 m/h  
 Travel Speed with Load: 2.8 m/h  
 Forks lower height: 3 1/8" (80mm)  
 Forks raised height: 7 7/8" (200mm)

VESTIL MANUFACTURING CORP.

Model: **EPT-2547-30**

Description:  
3,300 lbs Electric Pallet truck