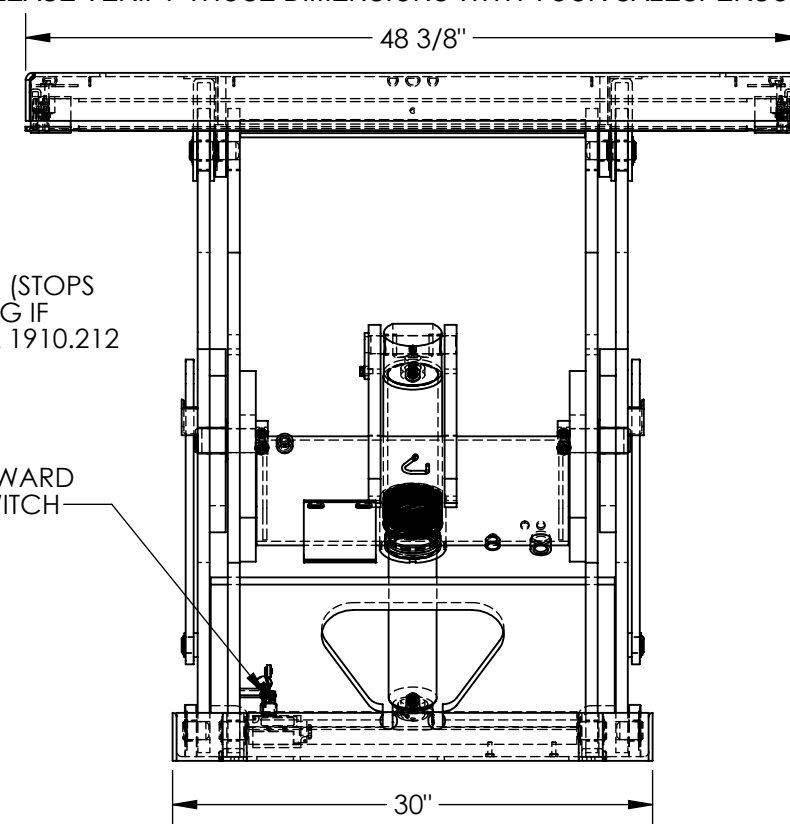
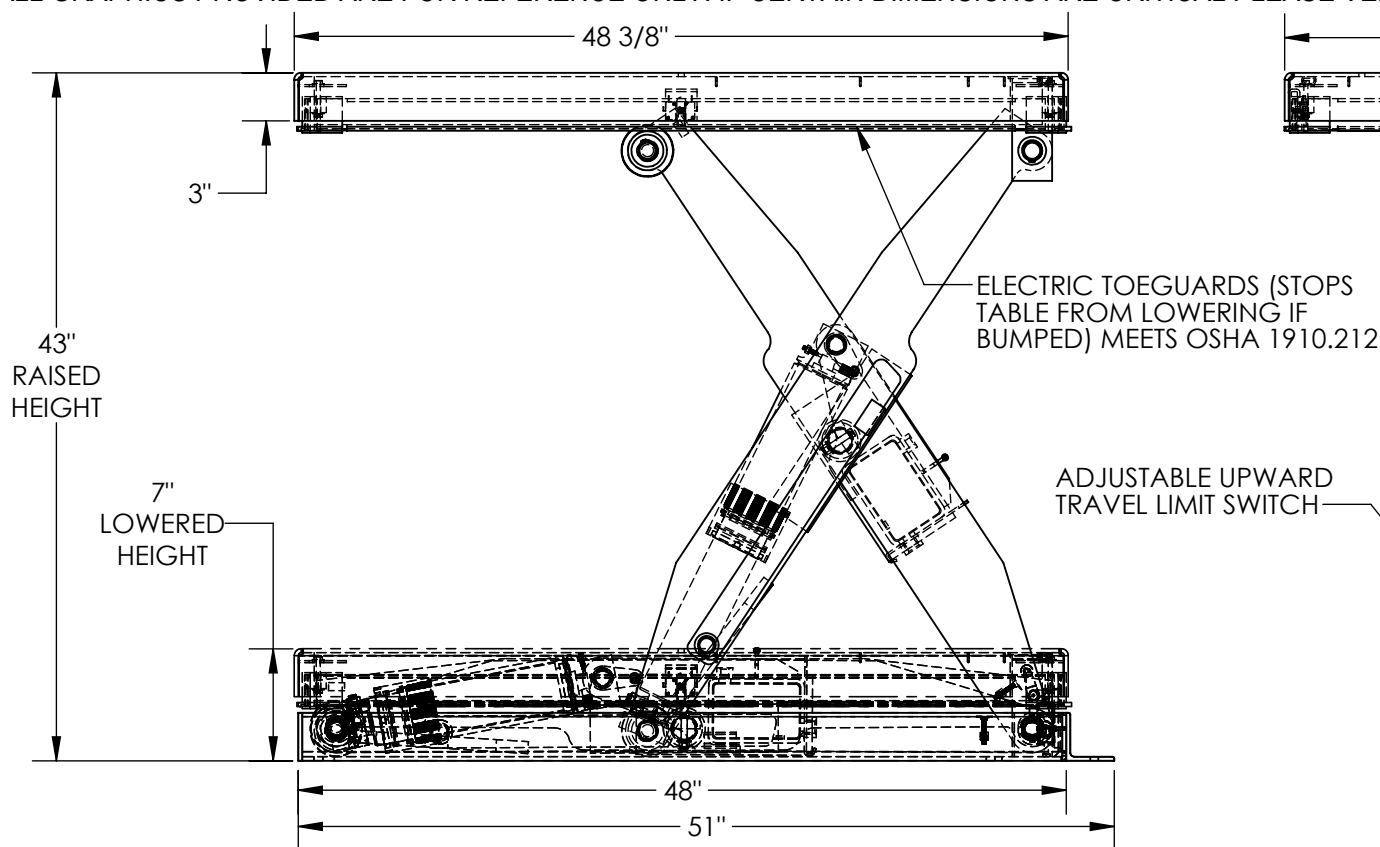


ELECTRIC HYDRAULIC SCISSOR LIFT TABLE - EHLT-4848-3-43

APPROX WEIGHT: 731.21 lbs.
DOES NOT INCLUDE WEIGHT OF POWER OR PACKAGING!!!

*** ANY ADDITIONS, DELETIONS, OR OMISSIONS MUST BE CORRECTED ON THIS DRAWING AS THIS DRAWING WILL BE CONSIDERED ALL INCLUSIVE ***
ALL GRAPHICS PROVIDED ARE FOR REFERENCE ONLY. IF CERTAIN DIMENSIONS ARE CRITICAL PLEASE VERIFY THOSE DIMENSIONS WITH YOUR SALESPERSON



DIMENSION TOLERANCE $\pm 1/4"$

STANDARD FEATURES

MODEL NUMBER IS EHLT-4848-3-43
PLATFORM WIDTH IS 48 3/8"
PLATFORM LENGTH IS 48 3/8"
OVERALL LENGTH IS 51"
PLATFORM RAISED HEIGHT IS 43"
PLATFORM LOWERED HEIGHT IS 7"
TABLE CAPACITY (EVENLY DISTRIBUTED)
LOAD IS 3,000 LBS
CONTROLS HAND PENDANT ON 8' CORD
SAFETY MAINTENANCE PROPS, DISPLACEMENT
STYLE CYLINDERS INSTALLED ROD DOWN
EMERGENCY SAFETY STOP HYDRAULIC FUSES
IN ALL CYLINDER UNITS HAVE 2' TEST LEAD
AND PIG TAIL

SPECIAL FEATURES

NONE

PLEASE CIRCLE SPECIFICATIONS:

POWER	AC	DC (12V)	AIR/OIL
MOTOR VOLTAGE	115	208	230 460
DEDICATED CIRCUIT REQUIRED 60Hz			
MOTOR PHASE	SINGLE	THREE	
CONTROL	HAND	FOOT	

FOR INTERNAL USE ONLY
PROJECT SIGN OFF

SALES	
ENG.	
FAB.	
POWER	

DECK TOLERANCE $\pm 1/2"$
TABLE HEIGHT TOLERANCE $\pm 1/2"$
DECK FLATNESS $\pm 1/4"$

APPROVAL

I, THE UNDERSIGNED, AGREE THAT THE PRODUCT AS REPRESENTED SATISFIES DESIGN AND DIMENSION REQUIREMENTS. I ALSO ACKNOWLEDGE MY DUTY TO CONFIRM PRODUCT AND INSTALLATION COMPLIANCE WITH ALL APPLICABLE FEDERAL, STATE AND LOCAL REGULATIONS AND STANDARDS.

ANY MODIFIED UNITS ARE NON-RETURNABLE

[] As drawn [] As marked

Signed: _____ Date: _____

Printed Name: _____

LEAD TIME WILL START UPON RECEIPT OF SIGNED APPROVAL DRAWING

DISTRIBUTOR'S NAME:

VESTIL MANUFACTURING

DRAWN BY: BCN

DATE: 8/30/2017

REFERENCE: X

SCALE: 1:12

QUOTED LEAD TIME: X

QUOTE # X

P.O.# X

W.O.# X

SALES: X

FILE NAME:

24-007-051-003