

| Assembly Instructions | Instrucciones de Ensamblaje | Directives d'assemblage |
|--------------------------------------|--|--|
| Customer Service US: 888-628-3466 | Servicio de atención al Cliente México: 01.800.681.6940 | Service à la clientèle Canada: 888-645-2986 |



Electric Pallet Truck

Note: Owner/Operator must read and understand Instruction Manual before using the product.

TABLE OF CONTENTS

| | |
|---|-------|
| 1. Introduction | 2 |
| 2. Main Parameters..... | 3 |
| 3. Safety Warnings | 4-6 |
| 4. Operation Instructions..... | 7-11 |
| 5. Battery Charging | 11-12 |
| 6. Inspection And Maintenance | 12-13 |
| 7. Circuit and Hydraulic Diagrams | 13 |
| 8. Replacement Parts | 14 |
| 9. Structure & Parts List..... | 14-29 |



1. Introduction

1.1 Introduction

Become familiar with the location and function of all controls before operating the truck. Do not use this truck unless you have been trained and authorized to do so. All information, specifications, and illustrations in this manual are based on the latest data available at the time of publication. Our company reserves the right to make changes or improvements at any time without notice.

The machine is certified to ANSI: B56.1 standards. Controller is certified to UL. Charger is certified to UL and CSA standards.

With proper operation and scheduled maintenance, this pallet truck should provide years of productive service.

1.2 Special Applications

The truck is designed for indoor use only.

Before using this truck in any special application, contact customer support for correct procedures.

Examples of special applications are as follows:

- Cold storage
- Corrosive environments
- Hazardous environments

1.3 Modifications And Additions

Modifications and additions that affect capacity and safe operation shall not be performed by the customer without the prior written approval of our corporation. Capacity, operation and maintenance instruction plates, tags and decals shall be changed accordingly.

2. Main Parameters

2.1 Capacity Plate

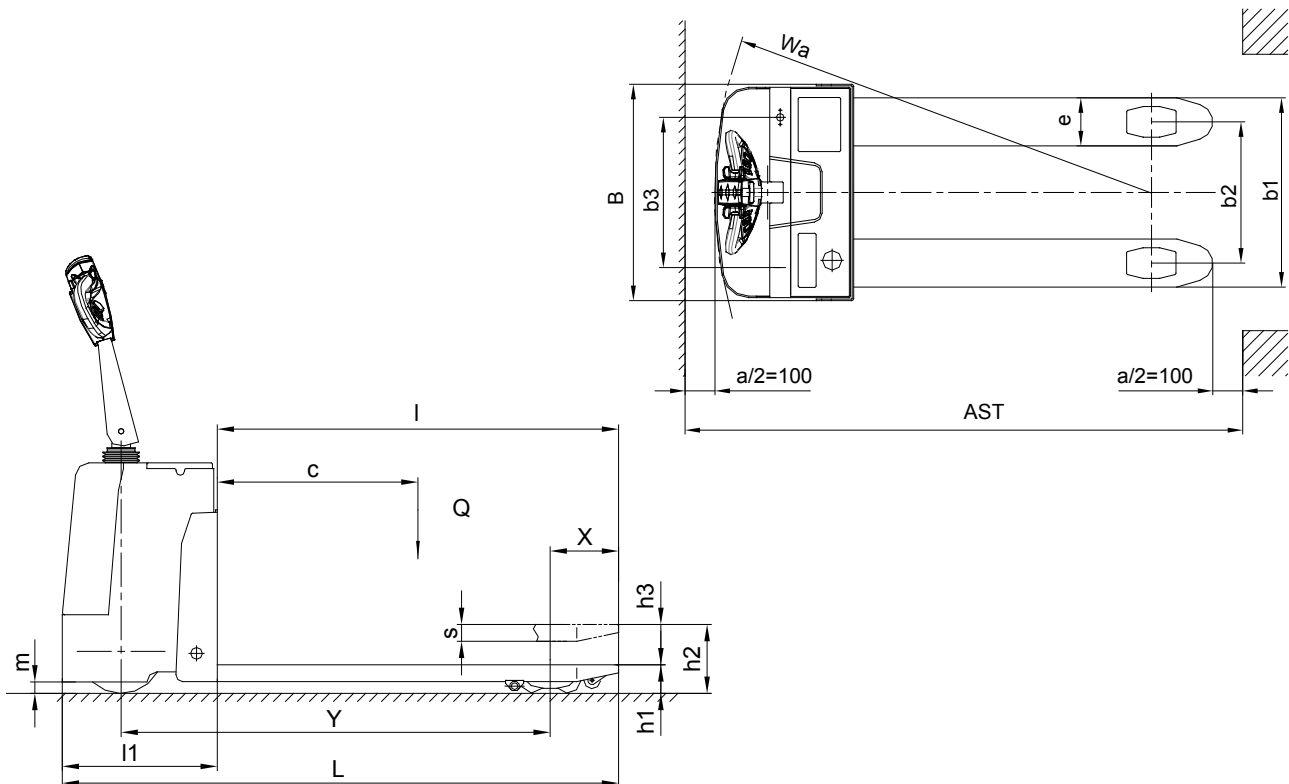
Capacity plate information:

The capacity plate is on the truck. It contains:

- Capacity information
- Truck weight (without battery or load)
- Truck dimensions

2.2 Main Parameters

| | | | | | |
|---------------------------|------|------|-----------------------------------|------|-------------|
| Load Capacity Q | kg | 1500 | Gradability | 4% | --- |
| Load Capacity Q | lbs. | 3300 | Fork Dimensions (s/e/l) | mm | 50/160/1200 |
| Max Fork Height h2 | mm | 195 | Balancing Wheel | mm | Ø75×35 |
| Load Center C | mm | 600 | Front Wheel | mm | Ø74×95 |
| Min Height of Forks h1 | mm | 75 | Driving Wheel | mm | Ø250×80 |
| Overall Width B | mm | 720 | Travel Speed, Loaded/ Unloaded | Km/h | 3.0/3.5 |
| Overall Length L | mm | 1665 | Driving Motor | w | 700 |
| Wheel Base Y | mm | 1280 | Lift Motor | w | 800 |
| Min Steering Radius Wa | mm | 1465 | Battery | V/Ah | 24/95 |
| Overall Width of Forks b1 | mm | 630 | Net Weight | kg | 286 |



3. Safety Warnings

3.1 Introduction

Safe operation of the truck depends upon the following:

- The operator's knowledge, skill and training
- Equipment maintenance
- The operator's high regard for personal safety and the safety of others
- A safe and suitable working environment

3.2 Safety Guidelines

Read and understand the following safety guidelines for maximum safe operation of this electric pallet truck.

- Read and obey all warnings and instructions contained in this manual.
- Operate this pallet truck only from the designated operating position.
- Never carry passengers.
- Never let anyone stand on or ride the forks.
- Drive the pallet truck safely. Always keep it under control.
- If you lose control of the pallet truck, let go of the control handle and quickly move away from the pallet truck.
- Elevate the lifting mechanism only to pick up a load. Stunt driving and horseplay are dangerous to personnel and equipment, and are not permitted.
- Do not overload the truck. Check the capacity plate for load weight information.
- Operate on a flat, smooth surface.
- Start, stop, change direction, travel, and brake smoothly. Slow down for turns and uneven or slippery surfaces that could cause the truck slide or tip. In any application, always approach and leave the aisle slowly.
- Be aware of objects protruding from racks, shelves and walls that can cause injury or come into contact with the truck.
- Operate the truck slowly and in an open area until you become thoroughly familiar with the pallet truck controls.
- Use extreme care when traveling without a load. Excessive speed with abrupt turns or on uneven surfaces may cause the truck to tip when empty as well as when loaded.



3.2 Safety Guidelines (continued)

- Examine the load before moving to ensure that it is securely and safely loaded.
- Always look in the direction of travel. Keep a clear view.
- When the load interferes with visibility, face the direction of travel with the load trailing.
- Do not handle unstable or loosely-stacked loads. Use special care when handling long, high, or wide loads.
- Obey all applicable traffic regulations. Yield the right-of-way to pedestrians. Drive on the right unless your work area follows different rules.
- Always stop the pallet truck and sound the horn when approaching crossing aisles, when entering or exiting an aisle, or when visibility is obstructed.
- Keep your hands and fingers inside the protected area of the control handle.
- Ensure there is enough light.
- Never drive this pallet truck up to anyone.
- If you leave the electric pallet truck unattended, fully lower the forks, shut the power off, remove the key from the optional key switch (if your truck has this option), and disconnect the battery.

3.3 Power Equipment Can Be Hazardous

- Any power equipment can be hazardous.
- Accidents may occur when power industrial equipment is in the hands of untrained or unauthorized operators. This electric pallet truck is no exception.
- Our company is constantly aware of safety and builds reliable products. By following the recommendations in this manual, you can help reduce personal injury and property damage.
- Before operating this pallet truck, read and understand this manual. Notify your supervisor if you have any concerns or questions. Carefully review all safety decals on the truck.

3.4 Pedestrians

Pay attention to pedestrians at all times. Many other people in your area of facility might not be familiar with this truck and how it operates. Always yield the right-of-way to pedestrians. Never drive this pallet truck up to anyone, particularly someone standing next to a solid object like a wall or workbench.

3.5 Travel

Operate this electric pallet truck at an authorized speed consistent with conditions. Always maintain a safe distance from other trucks. Keep the pallet truck under control at all times so you can stop in an emergency. Look in the direction of the path of travel, and keep a clear view. Stop the pallet truck and sound the horn when crossing aisles or when visibility is obstructed. Keep to the right unless conditions dictate otherwise. Do not pass another pallet truck traveling in the same direction at intersections, blind spots, or other dangerous locations. Avoid making sudden starts, quick stops or turns, particularly when operating with stacked loads. Slow down for rough, wet or slippery floors, and avoid running over any objects on the floor.

3.6 Power Equipment

Dockboards must be strong enough to carry the weight of the pallet truck, the weight of the operator and the load. The carrying capacity should be plainly marked on the dockboards. Dockboards should be securely anchored or equipped with devices to prevent slipping. The sides of the dockboards should be turned up at right angles to prevent the electric pallet truck from running over the edge. Dockboards should be designed and maintained so the edges have substantial contact with the carrier and the dock or loading platform to prevent rocking or sliding. Handholds, or other effective means, should be provided to permit safe handling. Positive positioning, such as wheel chocks, should be provided to prevent railroad cars or highway trucks from being moved while dockboards are in position.

3.7 Elevators

Check with your supervisor before you use this electric pallet truck near or in an elevator.

3.8 Lifting And Loading

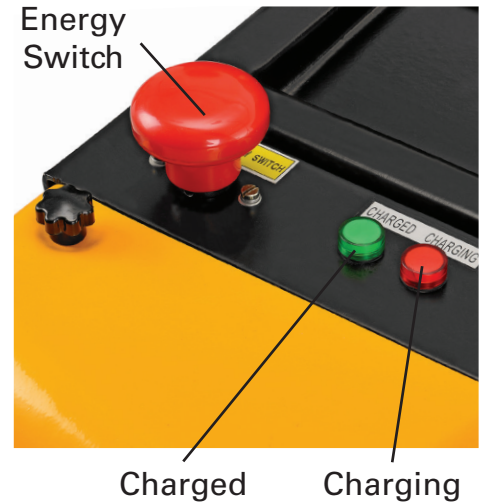
Follow these instructions when lifting and loading:

- Move only loads that are securely and safely loaded
- Place forks under the load as far as possible
- When the electric pallet truck is empty, travel with the forks fully lowered
- When moving bulky loads that block rearward visibility, drive the electric pallet truck with the load trailing
- Carry the load as low as is safely possible

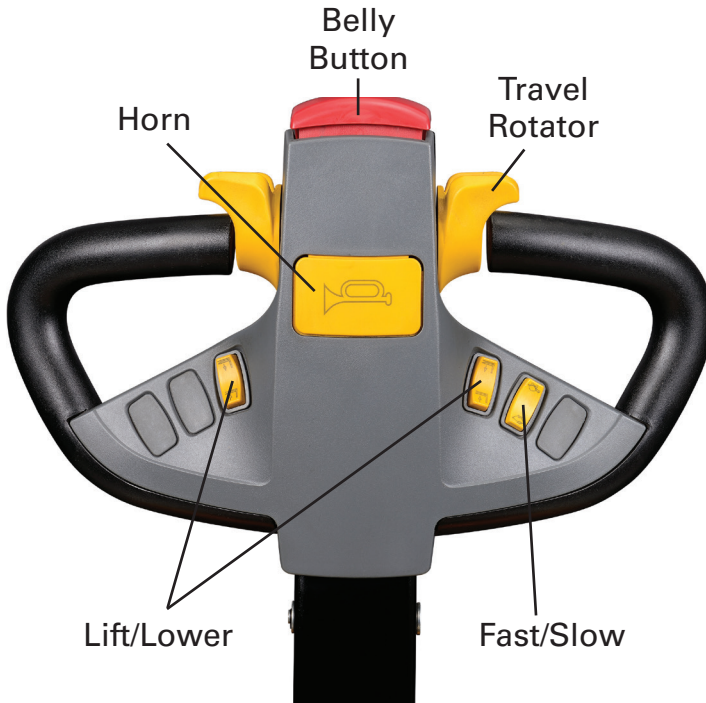
4. Operation Instructions

4.1 Power On And Off

- Turn on the truck by turning the key to right: Power on
- Turn off the truck by turning the key to left: Power off
- Always turn off the truck when leaving the truck



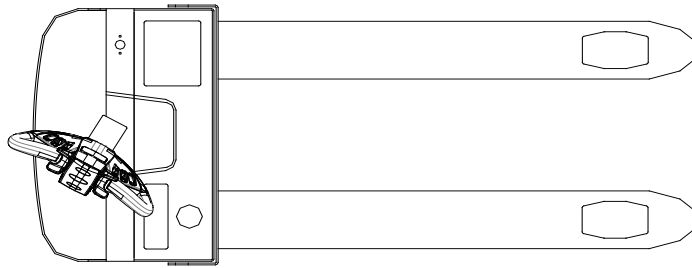
4.2 Operation Handle



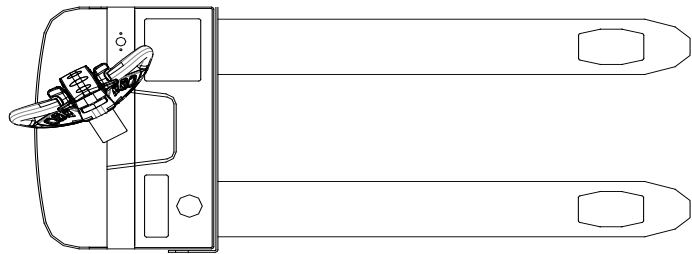
- Move the handle all the way down or all the way up to apply the brake

4.3 Steering

Control steering by moving the control handle from side to side



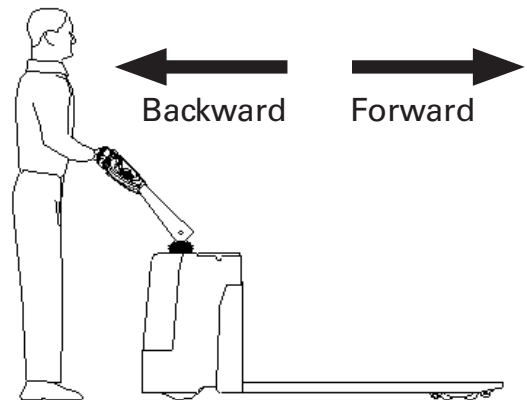
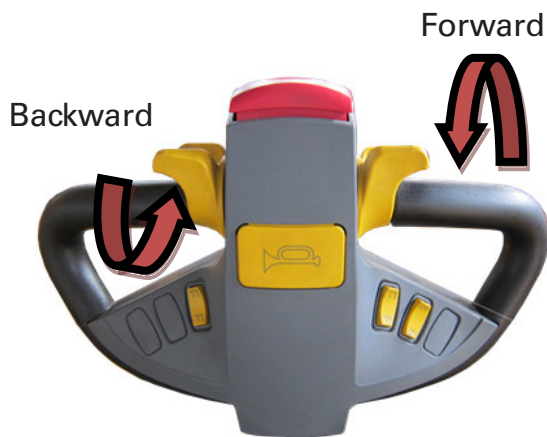
Steer Right



Steer Left

4.4 Traveling

Rotate the throttle button in the direction you want to travel. The farther you rotate the throttle button from the neutral position, the faster the truck will travel.



4.5 Emergency Reverse Button

If you accidentally hit the reverse button while working, the truck will stop and then move in the direction of the forks. Be careful-the reverse button cannot prevent injuries.

Emergency Reverse Button



4.6 Emergency Switch

Pushing down the emergency switch will cut the power source of the machine, making it stop immediately.



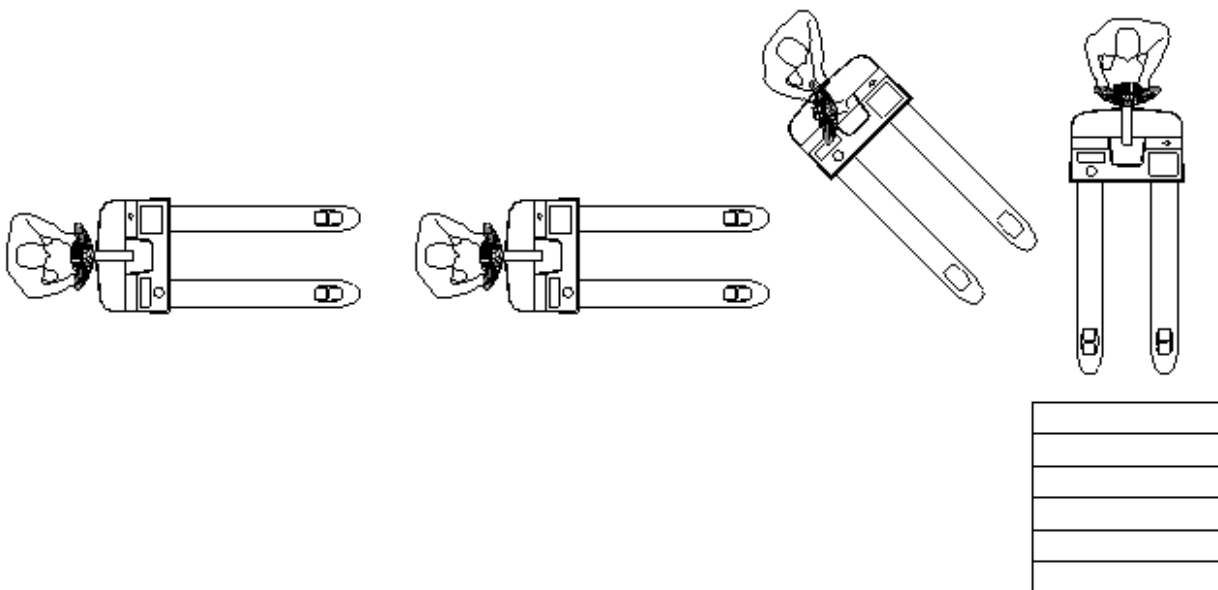
Press down to cut off power



4.7 Entering A Pallet

Follow these steps when entering a pallet with a pallet truck:

1. Approach the pallet from either side with the nearest fork about 3 in (76mm) out in the aisle.
2. When the fork is just forward of the pallet edge, stop.
3. Turn the control handle to swing the front of the pallet truck out into the aisle until the forks begin to enter the pallet at an angle.
4. Continue maneuvering the pallet truck, gradually returning the control handle straight ahead until the pallet truck faces the pallet squarely.
5. Drive the pallet truck forks-first until the pallet is completely on the forks. Ensure that the load wheels are not resting on any of the boards on the bottom of the pallet.
6. Lift the pallet just enough to raise it off the floor.
7. Change direction and carefully swing the pallet truck out into the aisle.

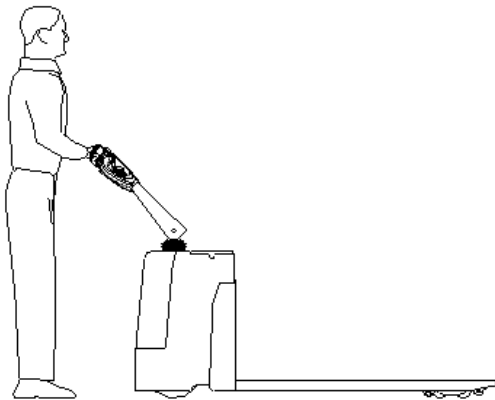


4.8 Traveling With A Load

Always look in the direction of travel. When transporting loads over a long distance, always travel in a forward direction with the forks trailing. Never enter a trailer unless its wheels are checked and the trailer is properly jacked.

When traveling with a load, follow these instructions:

- Ensure the load on the forks is stable
- Travel at the safest speed that conditions allow, and always within authorized facility speed limits. Operate the pallet truck only at a speed that permits the truck to stop safely at all times and under all travel conditions.
- Start, steer, change direction, and brake smoothly. Slow down for turns and uneven or slippery surfaces to avoid causing the pallet truck to slide or tip.
- Keep a clear view and watch out for obstructions. When the load interferes with visibility, travel with the load trailing.
- Check the condition of all floors, dockboards, semi-trailer beds, ramps, elevators, and so on, to ensure they can safely support the pallet truck and its load.



- Observe all traffic regulations. Yield the right-of-way to pedestrians. Stop and sound the horn at crossing aisles and whenever vision is obstructed.
- When operating in narrow aisles, stay as far away from stockpiles as possible in order to allow the pallet truck to swing clear.
- Never cross railroad tracks except at approved floor grade crossings. Cross at an angle perpendicular to the tracks.

4.9 Positioning And Unloading

To position and unload the pallet truck, follow these steps:

1. Slowly maneuver the pallet truck with the load to the required area.
2. Place the load squarely and evenly to make use of all available space.
3. Lower the forks completely.
4. Drive the pallet truck slowly away to withdraw the forks.

5. Battery charging

5.1 Battery Indicator

The lighted bar shows how much charge is left in the battery. Check battery indicator regularly.



Sufficient



Insufficient. Battery charging is required but not urgent.



Almost depleted. Battery charging is urgent.

5.2 Battery Procedures

The truck is mounted with two maintenance-free 12V batteries. The battery charger is mounted inside the truck. For your safety, observe the following precautions when working with or around pallet truck batteries:

- Read, understand and follow procedures, recommendations, and specifications in the battery and battery charger manufacturers' manuals.
- Do not smoke, use open flames, or use spark-producing devices near batteries.
- Charge batteries in a well-ventilated area to avoid hydrogen gas concentration.
- Do not break live circuits at the battery terminals, because a spark usually occurs at the point where a live circuit is broken.
- To avoid shorts and sparks, keep plugs, terminals, cables, and receptacles in good condition.

5.3 Battery Removal And Installation

Take precautions not to jam or cut the battery cables during installation of the battery, as this could result in a short that may cause a fire or a battery explosion.

- Disconnect the battery connectors/cables from the truck.
- Ensure the removed battery is properly stored.
- When installing a battery, always ensure that it is fully charged before operating the truck

5.4 Charging Process

1. Press down the emergency switch on the keypad and turn the key switch to OFF.
2. Open the battery box cap board and find the input power cord of the charger.
3. Connect the power plug of the charger into the outlet of the local power supply.
This will automatically turn the charger on, and it will run at a rate commensurate with the requirements of the batteries. The charger will automatically control the procedure. When the batteries are fully charged, the charger will only supply enough current to maintain the batteries' charge.

6. Inspection And Maintenance

6.1 Inspection And Maintenance Schedule

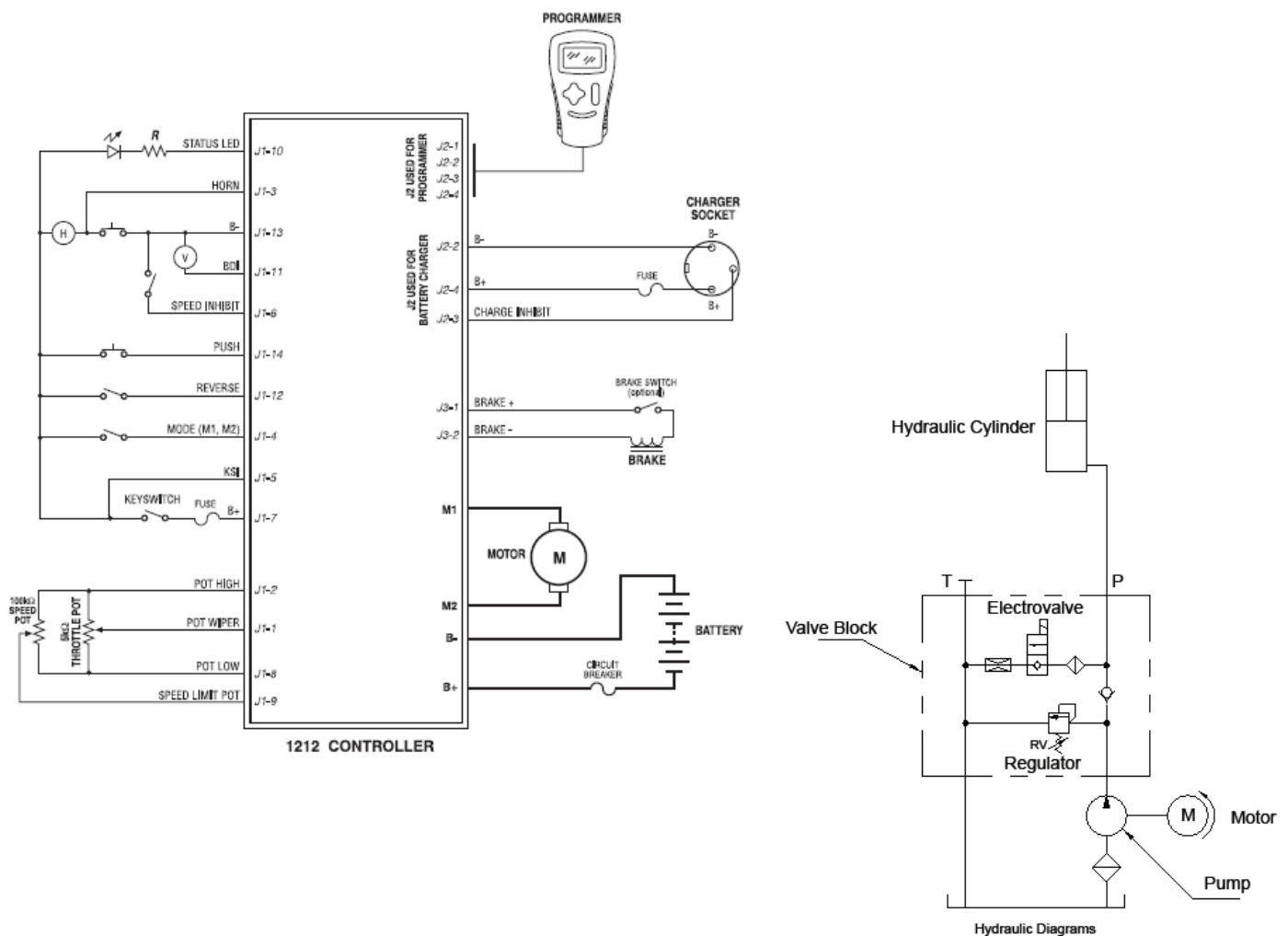
| Item | Component | Check | Time Interval | | |
|------|-------------------|---|------------------|-------------------------|------------------------|
| | | | Daily or 8 Hours | Two Months or 250 Hours | Annually or 1500 Hours |
| 1 | Battery | Check cleanliness and exterior. | √ | | |
| | | Check charging condition. | √ | | |
| 2 | Battery Connector | Check connector. Ensure all powered functions shut down when disconnected. | √ | | |
| | | Ensure the battery is properly installed. | √ | | |
| 3 | Brake | Verify the drive motor does not run while the brake is applied. | √ | | |
| | | Check that the control handle returns to the vertical position when released. | √ | | |
| | | Check the brake disc for wear. Replace if necessary. | | | √ |
| 4 | Decals | All decals must be in place and legible. | √ | | |
| 5 | Drive Unit | Check for oil leaks. If leaks are present, check to see if the oil level is low. If so, identify the cause and fill to appropriate level. | √ | | |
| 6 | Drive Wheel | Check the tightness of the screws on the drive wheel. | | √ | |
| 7 | Electrical System | Visually inspect all cable for damage and replace as needed. | | √ | |
| 9 | General | Check the speed and directional controls. | √ | | |
| | | Check the steering operation. | √ | | |
| | | Check the lifting and lowering functions. | √ | | |
| | | Check the operation of the Emergency Reverse Button. | √ | | |
| | | Check the Operation of the Key Switch. | √ | | |
| | | Note any unusual noises during operation, and report it to a supervisor or maintenance personnel right away. | √ | | |
| | | Check for loose hardware. Tighten if necessary. | | √ | |
| 10 | Lift Cylinder | Check the lift cylinder for leaks. | | √ | |
| 11 | Wheels | Check the condition of the drive wheel and load wheels. Remove any steel chips and foreign material to prevent wheel damage. | √ | | |

6.2 Change Oil

It is advised to change the hydraulic oil every 6 months or every 600 hours. Change the oil every 6 months even if the hours of use are less than 600. To change the oil: Make sure the forks are at the lowest position. Disassemble the tube joint at the lower part of cylinder and put it in a container. Operate the lift handle to work the pump and exhaust the oil. If the pallet truck is used in a low-temperature environment, lift and lower two or three times after adding hydraulic oil to purge the system. If the lift height is insufficient, replenish oil. Check the hydraulic oil level again and add more if needed.

7. Circuit And Hydraulic Diagrams

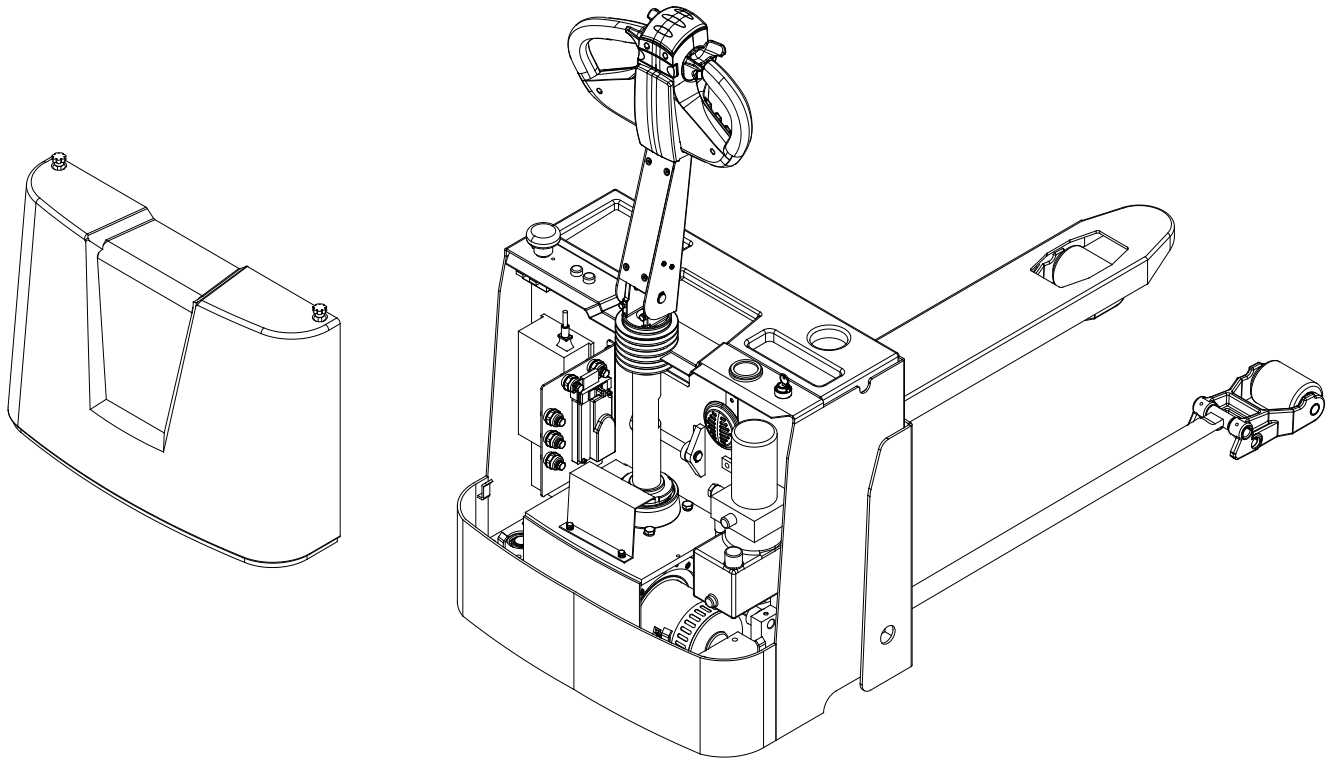
Electric pallet trucks are controlled by the controller. The controller has step-free, speed change, quick start, emergency reverse, brake, etc. Furthermore, it has protection functions of over voltage, over current, under voltage, reverse brake and more.



8. Replacement Parts

| Item | Part No | Description | Material | Position | Quantity |
|------|---------|------------------|----------|--------------------------|----------|
| 1 | 30428 | Driving Wheel | PU | Driving Wheel Assembly | 1 |
| 2 | 30409 | Gasket | Rubber | Driving Wheel Assembly | 1 |
| 3 | 30424 | Oil Seal | Rubber | Driving Wheel Assembly | 1 |
| 4 | 10721 | Fuse | | Electric Control System | 1 |
| 5 | 10718 | Fuse | | Electric Control System | 1 |
| 6 | 20106 | Front Wheel | PU | Front Wheel Assembly | 4 |
| 7 | 230516 | Balance Wheel | PU | Balance Wheel Assembly | 2 |
| 8 | 230115 | Microswitch | | Handle Assembly | 1 |
| 9 | 230114 | Pneumatic Spring | | Handle Assembly | 1 |
| 10 | 230108 | Composite Sleeve | | Handle Assembly | 2 |
| 11 | 230303 | Composite Sleeve | | Connecting Rod Unit | 2 |
| 12 | 230404 | Composite Sleeve | | Connecting Rod Assembly | 2 |
| 13 | 230406 | Composite Sleeve | | Connecting Rod Assembly | 2 |
| 14 | 231006 | Composite Sleeve | | Cylinder Assembling Unit | 3 |
| 15 | 231011 | Composite Sleeve | | Cylinder Assembling Unit | 2 |
| 16 | 230004 | Oil Seal | Rubber | Cylinder Assembly | 1 |
| 17 | 231108 | Oil Seal | Rubber | Cylinder Assembly | 1 |

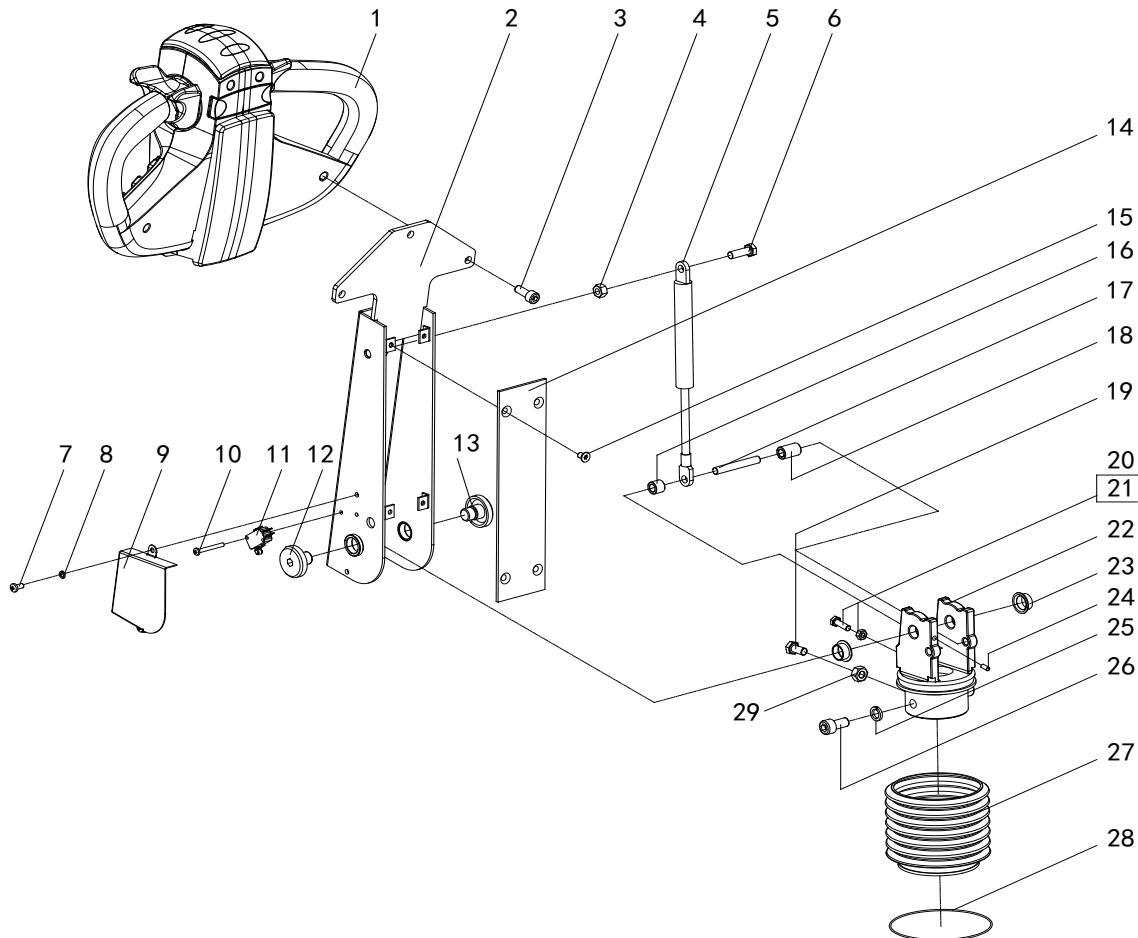
9. Structure And Part List



- 9.1 Handle Assembly
- 9.2 Front Wheel Assembly
- 9.3 Connecting Rod Unit
- 9.4 Connecting Rod Assembly
- 9.5 Balance Wheel Assembly
- 9.6 Electric Control System
- 9.7 Electric Board
- 9.8 Steering System
- 9.9 Driving Wheel Assembly
- 9.10 Cylinder Assembling Unit
- 9.11 Cylinder Assembly
- 9.12 Hydraulic System
- 9.13 Control Wire

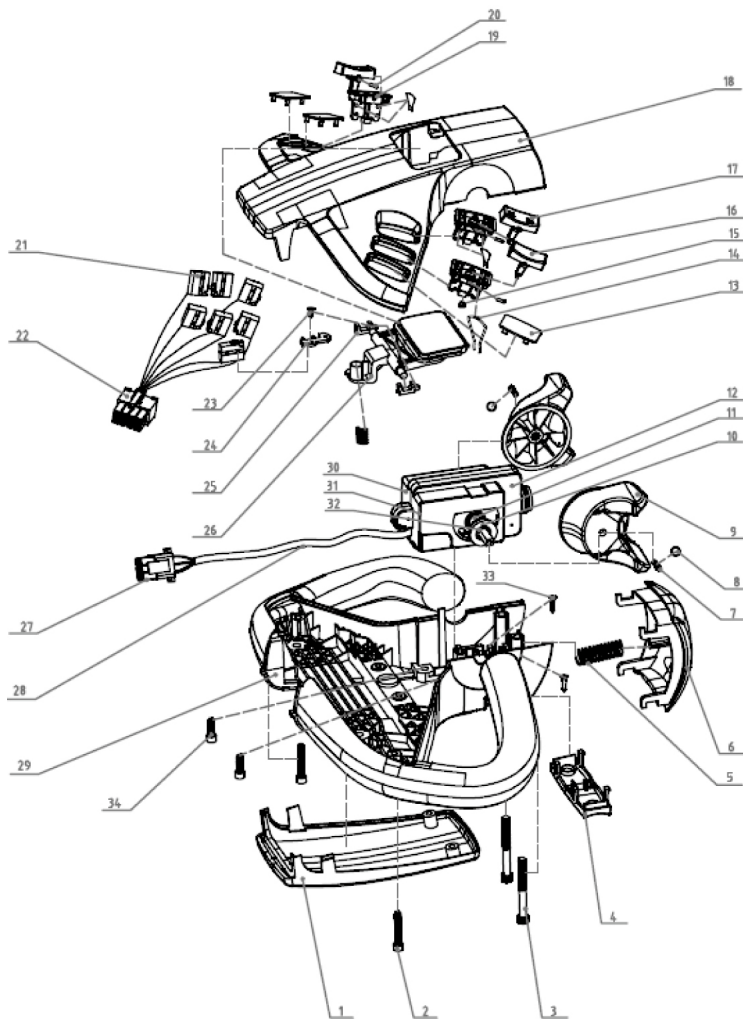
9.1 Handle Assembly

| Item | Part No | Description | Qty | Item | Part No | Description | Qty |
|------|---------|-----------------------|-----|------|---------|-------------------------|-----|
| 1 | 230101 | Operation Handle Unit | 1 | 16 | 230137 | Casing tube 1 | 1 |
| 2 | 230117A | Welding Handle | 1 | 17 | 230138 | Pnumatic spring spindle | 1 |
| 3 | 230115 | Screw | 3 | 18 | 230139 | Casing tube 2 | 1 |
| 4 | 230130 | Nut | 1 | 19 | 230123 | Bolt | 1 |
| 5 | 230106 | Pnumatic spring | 1 | 20 | 230122 | Bolt | 2 |
| 6 | 230131 | Bolt | 1 | 21 | 230124 | Nut | 2 |
| 7 | 230132 | Screw | 2 | 22 | 230109A | Handle base | 1 |
| 8 | 230133 | Spring washer | 2 | 23 | 230108 | Composite sleeve | 2 |
| 9 | 230134 | Shield cover | 1 | 24 | 230140 | Screw | 1 |
| 10 | 230118 | Screw | 2 | 25 | 230141 | Spring washer | 2 |
| 11 | 230120 | Microswitch | 1 | 26 | 230142 | Screw | 2 |
| 12 | 230135 | Spindle | 1 | 27 | 230113 | Dustproof cover | 1 |
| 13 | 230136 | Cam | 1 | 28 | 230114 | Steel supporting ring | 1 |
| 14 | 230105 | Back plate | 1 | 29 | 230143 | Nut | 1 |
| 15 | 230104 | Screw | 4 | | | | |



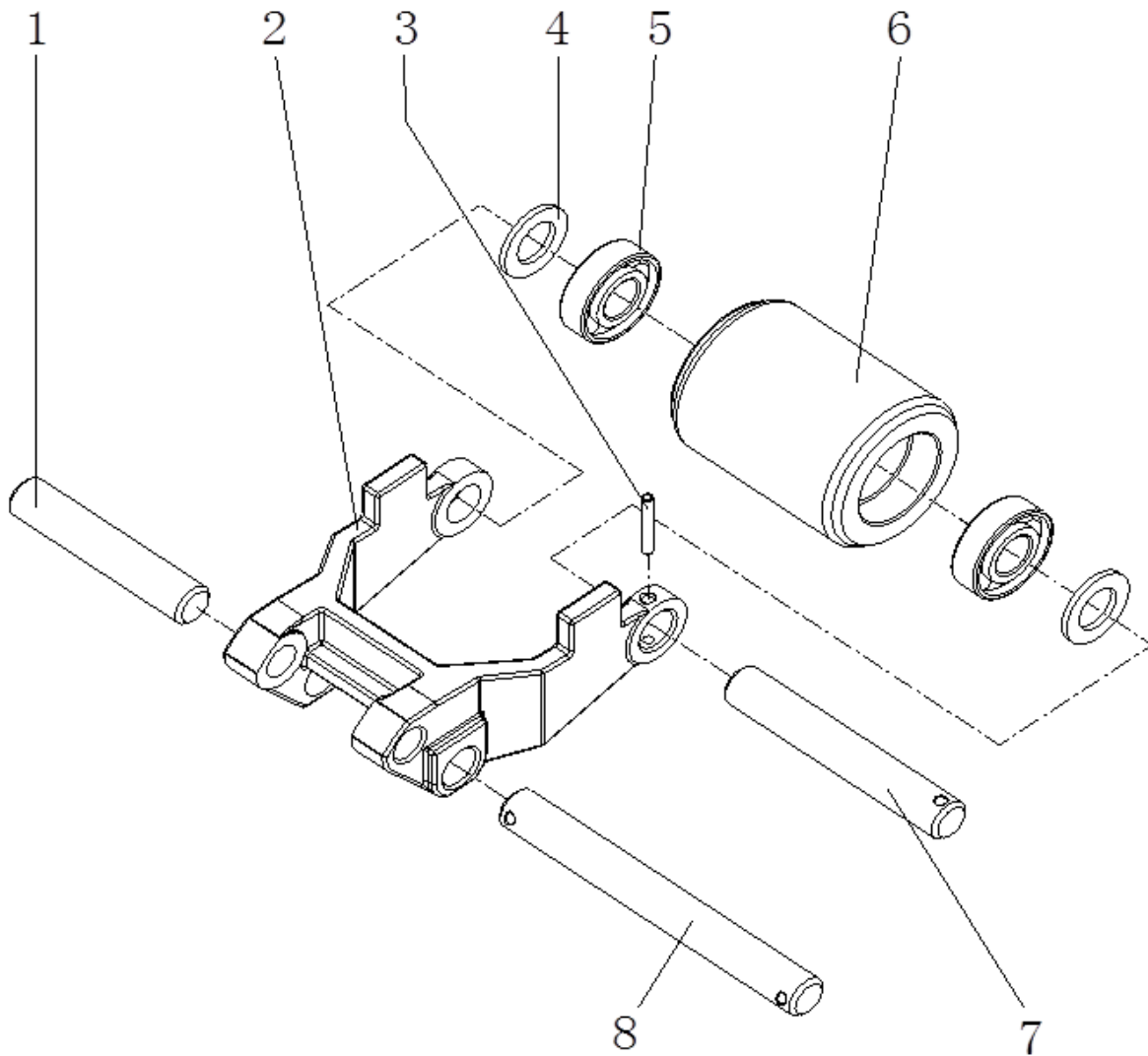
230101 Operation Handle Unit

| Item | Part No | Description | Qty | Item | Part No | Description | Qty |
|------|---------|--------------------|-----|------|---------|------------------------|-----|
| 1 | 010101 | decorative cover | 1 | 18 | 010118 | upper cover | 1 |
| 2 | 010102 | bolt | 2 | 19 | 010119 | lift/lower button base | 3 |
| 3 | 010103 | bolt | 2 | 20 | 010120 | cylindrical pin | 3 |
| 4 | 010104 | button | 1 | 21 | 010121 | microswitch | 7 |
| 5 | 010105 | pressure spring | 1 | 22 | 010122 | control line plug | 1 |
| 6 | 010106 | belly switch | 1 | 23 | 010123 | screw | 1 |
| 7 | 010107 | bolt | 2 | 24 | 010124 | shelf | 1 |
| 8 | 010108 | spring washer | 2 | 25 | 010125 | horn button clip | 2 |
| 9 | 010109 | speed rotator | 2 | 26 | 010126 | horn button | 1 |
| 10 | 010110 | outer bush | 2 | 27 | 010127 | speed regulator plug | 1 |
| 11 | 010111 | inner bush | 2 | 28 | 010128 | speed regulator | 1 |
| 12 | 010112 | screw | 3 | 29 | 010129 | under cover | 1 |
| 13 | 010113 | button hole cover | 3 | 30 | 010130 | right holder | 1 |
| 14 | 010114 | switch circlip | 5 | 31 | 010131 | left holder | 1 |
| 15 | 010115 | action ball | 1 | 32 | 010132 | wave pad | 4 |
| 16 | 010116 | speed shift button | 1 | 33 | 010133 | bolt | 2 |
| 17 | 010117 | lift/lower button | 2 | 34 | 010134 | bolt | 2 |



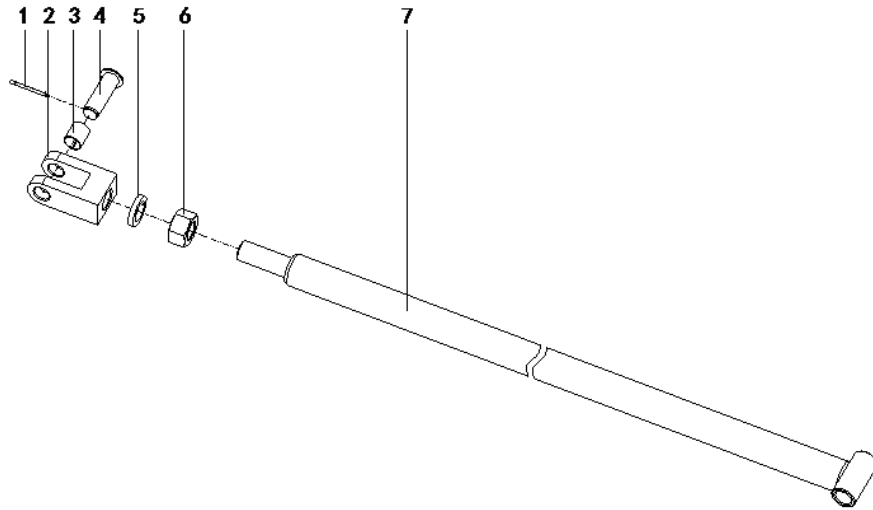
9.2 Front Wheel Assembly

| Item | Part No | Description | Qty | Item | Part No | Description | Qty |
|------|---------|----------------------|-----|------|---------|------------------|-----|
| 1 | 20101 | Connecting Rod Shaft | 2 | 5 | 20105 | Bearing | 8 |
| 2 | 20102 | Front Joint Frame | 2 | 6 | 20106 | Sing Front Wheel | 2 |
| 3 | 20103 | Spring Pin | 4 | 7 | 20107 | Pin Shaft | 2 |
| 4 | 20104 | Spacer Ring | 8 | 8 | 20108 | Pin Shaft | 2 |



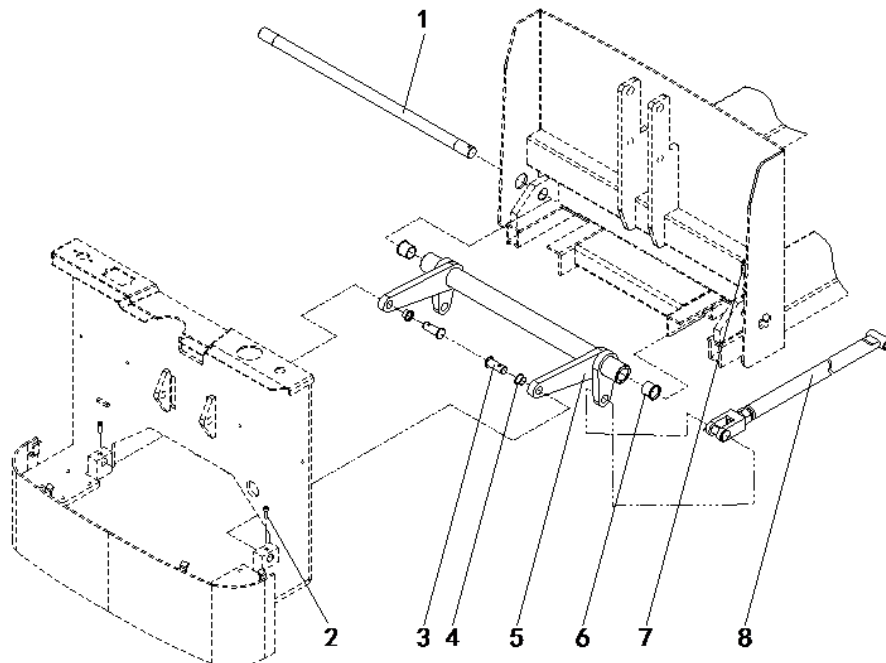
9.3 Connecting Rod Unit

| Item | Part No | Description | Qty | Item | Part No | Description | Qty |
|------|---------|------------------|-----|------|---------|----------------|-----|
| 1 | 230301 | Split Pin | 2 | 5 | 230305 | Spring Washer | 2 |
| 2 | 230302 | Connecting Fork | 2 | 6 | 230306 | Nut | 2 |
| 3 | 230303 | Composite Sleeve | 2 | 7 | 230307 | Connecting Rod | 2 |
| 4 | 230304 | Pin Shaft | 2 | | | | |



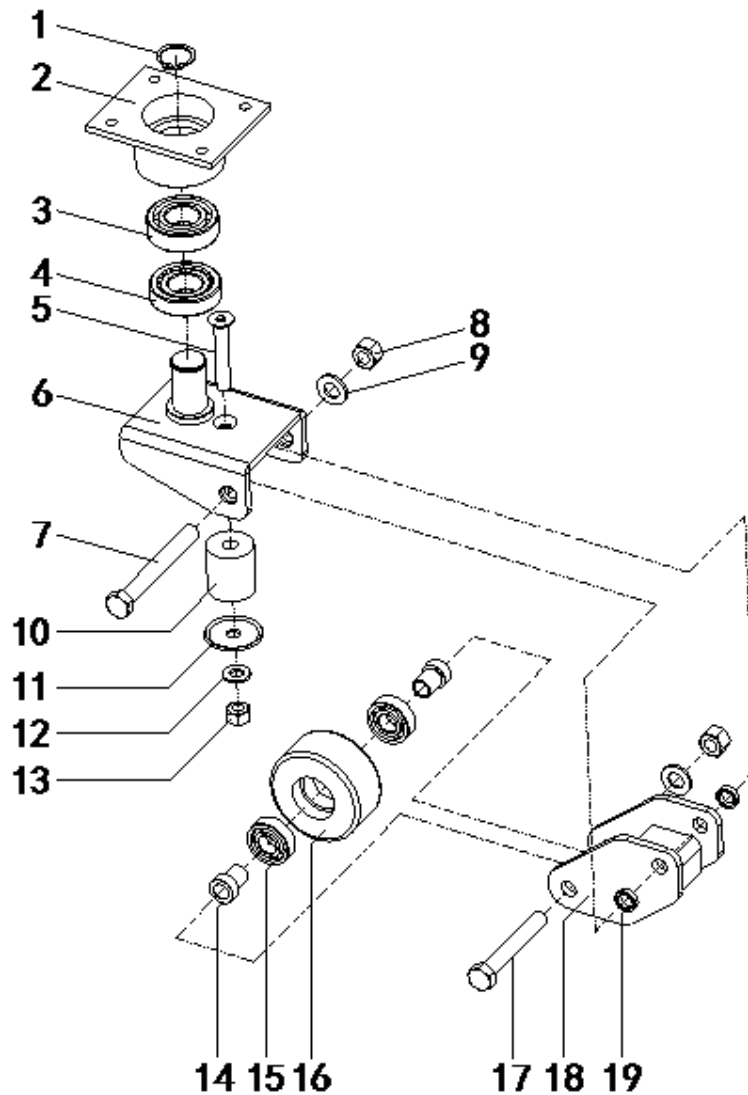
9.4 Connecting Rod Assembly

| Item | Part No | Description | Qty | Item | Part No | Description | Qty |
|------|---------|------------------|-----|------|---------|---------------------|-----|
| 1 | 230401 | Long Shaft | 1 | 5 | 230405 | Rear Joint Frame | 1 |
| 2 | 230402 | Screw | 2 | 6 | 230406 | Composite Sleeve | 2 |
| 3 | 230403 | Pin Shaft | 2 | 7 | 230407 | Screw | 2 |
| 4 | 230404 | Composite Sleeve | 2 | 8 | 9.3 | Connecting Rod Unit | 2 |



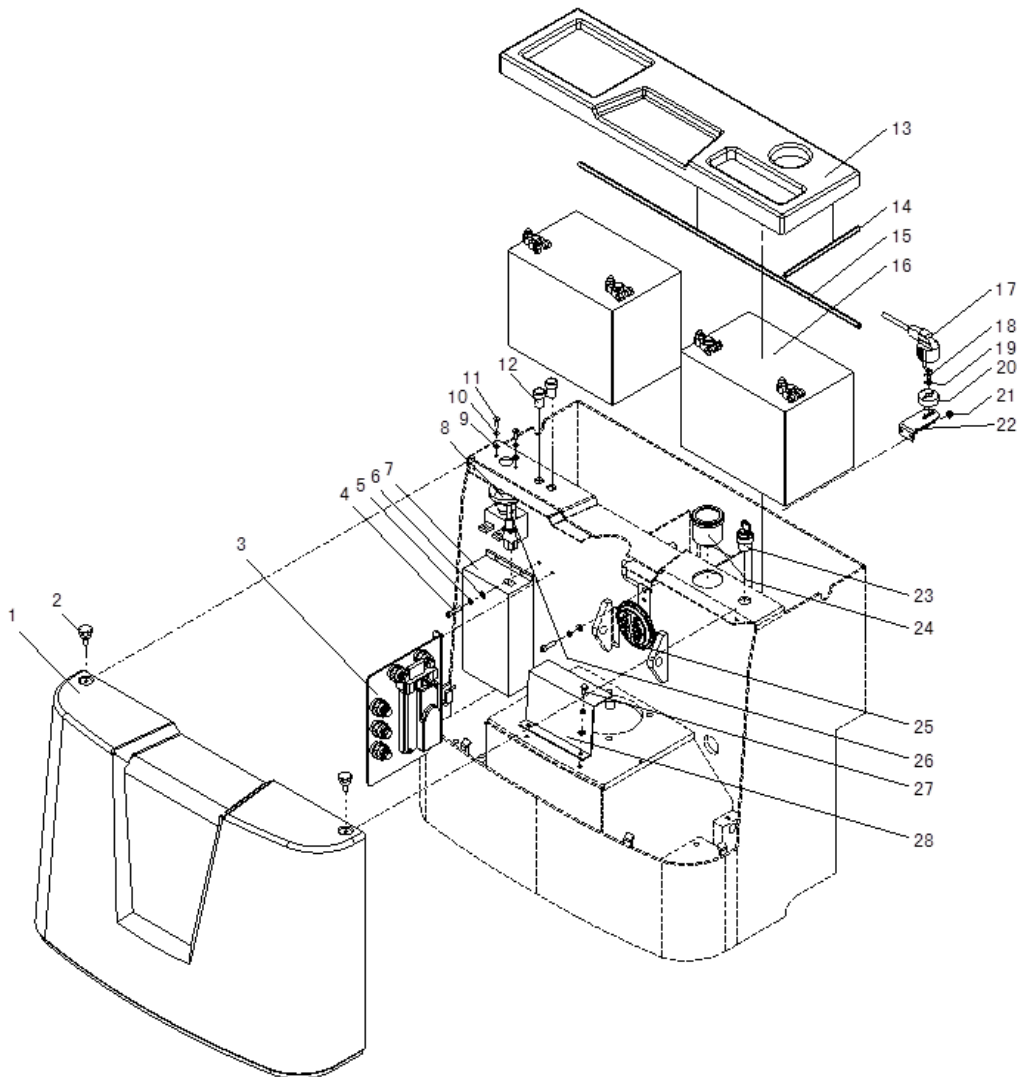
9.5 Balance Wheel Assembly

| Item | Part No | Description | Qty | Item | Part No | Description | Qty |
|------|---------|------------------------|-----|------|---------|---------------|-----|
| 1 | 230501 | Circlip For Shaft | 2 | 11 | 230511 | Lining Ring | 2 |
| 2 | 230502 | Bearing Base | 2 | 12 | 230512 | Washer | 2 |
| 3 | 230503 | Ball Bearing | 2 | 13 | 230513 | Nut | 2 |
| 4 | 230504 | Tapered Roller Bearing | 2 | 14 | 230514 | Sleeve | 4 |
| 5 | 230505 | Screw | 2 | 15 | 230515 | Ball Bearing | 4 |
| 6 | 230506 | Rotating Frame | 2 | 16 | 230516 | Balance Wheel | 2 |
| 7 | 230507 | Bolt | 2 | 17 | 230517 | Bolt | 2 |
| 8 | 230508 | Nut | 4 | 18 | 230518 | Swinging Fork | 2 |
| 9 | 230509 | Washer | 4 | 19 | 230519 | Ring | 4 |
| 10 | 230510 | Spring | 2 | | | | |



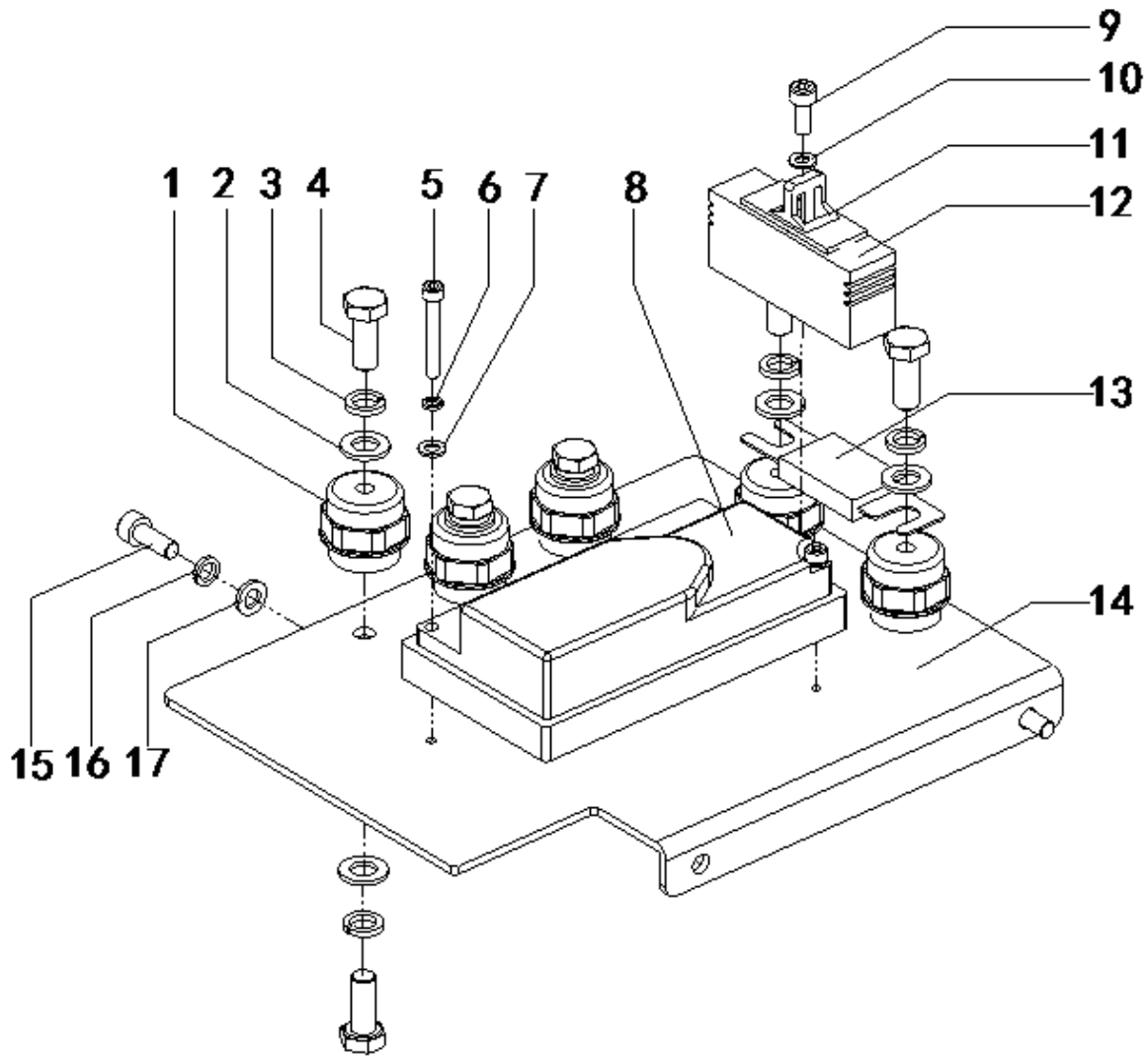
9.6 Electric Control System

| Item | Part No | Description | Qty | Item | Part No | Description | Qty |
|------|---------|--------------------|-----|------|---------|-----------------------|-----|
| 1 | 230601 | Rear Cover | 1 | 15 | 230613 | Fillet 2 | 1 |
| 2 | 230602 | Screw | 2 | 16 | 230614 | Battery | 2 |
| 3 | 9.7 | Electrical Board | 1 | 17 | 230615 | Charge wire with plug | 1 |
| 4 | 230603 | Screw | 6 | 18 | 230616 | Screw | 1 |
| 5 | 230604 | Spring Washer | 8 | 19 | 230617 | Spring Washer | 1 |
| 6 | 230605 | Washer | 8 | 20 | 230618 | Socket | 1 |
| 7 | 230606 | Battery Charger | 1 | 21 | 230619 | Nut | 2 |
| 8 | 10702 | Emergency Switch | 1 | 22 | 230620 | Socket Plate | 1 |
| 9 | 230607 | Washer | 2 | 23 | 10128 | Key Switch | 1 |
| 10 | 230608 | Spring Washer | 2 | 24 | 10726 | Power meter | 1 |
| 11 | 230609 | Screw | 2 | 25 | 10722 | Horn | 1 |
| 12 | 230610 | Charging Indicator | 2 | 26 | 9.13 | Control Wire | 1 |
| 13 | 230611 | Battery Box Cover | 1 | 27 | 230621 | Screw | 2 |
| 14 | 230612 | Fillet 1 | 2 | 28 | 230622 | Guard plate | 1 |



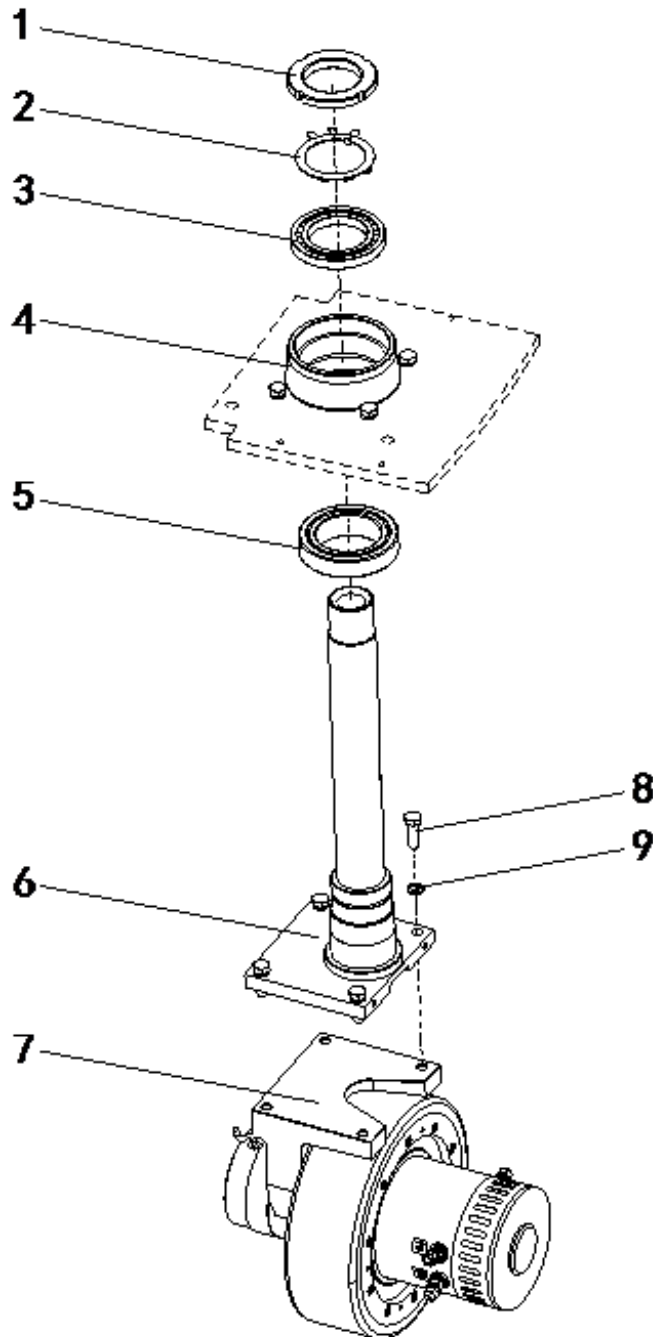
9.7 Electrical Board

| Item | Part No | Description | Qty | Item | Part No | Description | Qty |
|------|---------|---------------------|-----|------|---------|---------------|-----|
| 1 | 10705 | Insulating Base | 5 | 10 | 230709 | Spring Washer | 1 |
| 2 | 230701 | Washer | 10 | 11 | 10720 | Fuse Base | 2 |
| 3 | 230702 | Spring Washer | 10 | 12 | 10721 | Fuse | 1 |
| 4 | 230703 | Screw | 10 | 13 | 10718 | Fuse | 1 |
| 5 | 230704 | Screw | 2 | 14 | 230710 | Board | 1 |
| 6 | 230705 | Spring Washer | 2 | 15 | 230711 | Screw | 2 |
| 7 | 230706 | Washer | 2 | 16 | 230712 | Spring Washer | 2 |
| 8 | 230707 | Electric Controller | 1 | 17 | 230713 | Washer | 2 |
| 9 | 230708 | Screw | 1 | | | | |



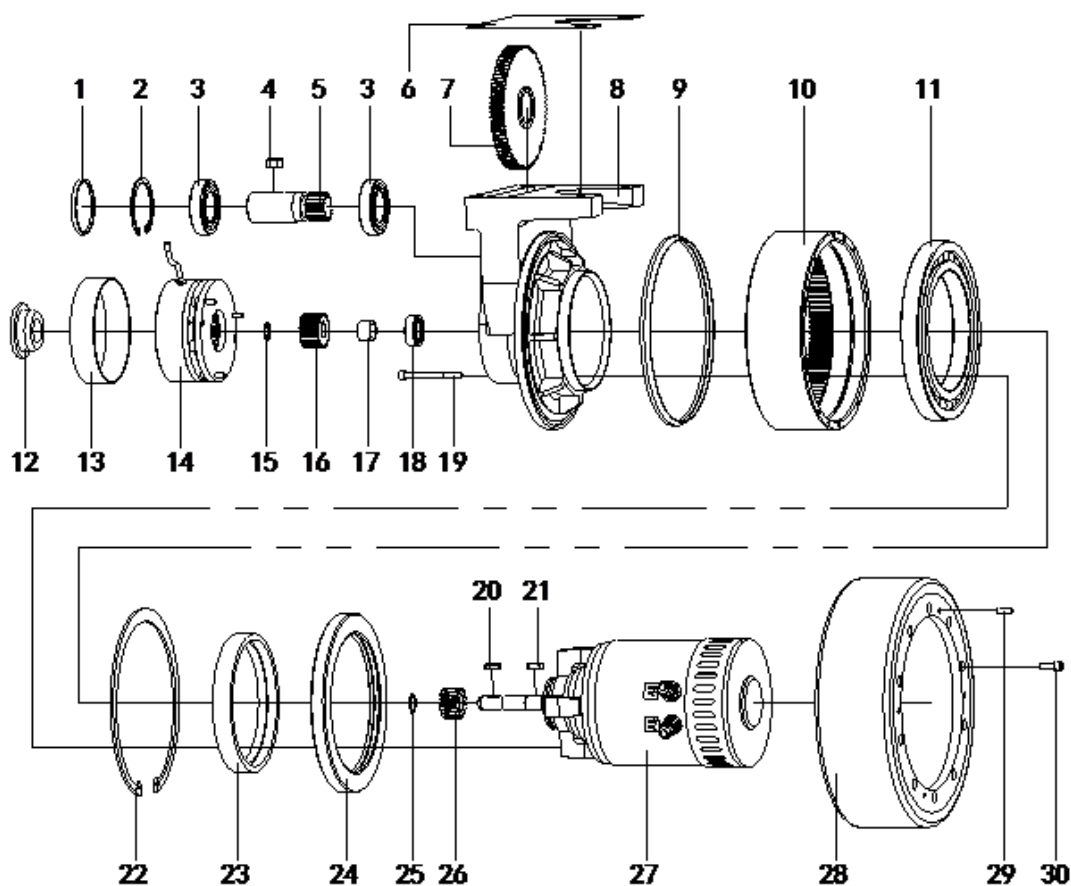
9.8 Steering System

| Item | Part No | Description | Qty | Item | Part No | Description | Qty |
|------|---------|------------------------|-----|------|---------|--------------------|-----|
| 1 | 230801 | Round Nut | 1 | 6 | 230806 | Spindle | 1 |
| 2 | 230802 | Lock Washer | 1 | 7 | 11.8 | Driving Wheel Unit | 1 |
| 3 | 230803 | Ball Bearing | 1 | 8 | 230808 | Bolt | 8 |
| 4 | 230804 | Bearing Base | 1 | 9 | 230809 | Spring Washer | 8 |
| 5 | 230805 | Tapered Roller Bearing | 1 | | | | |



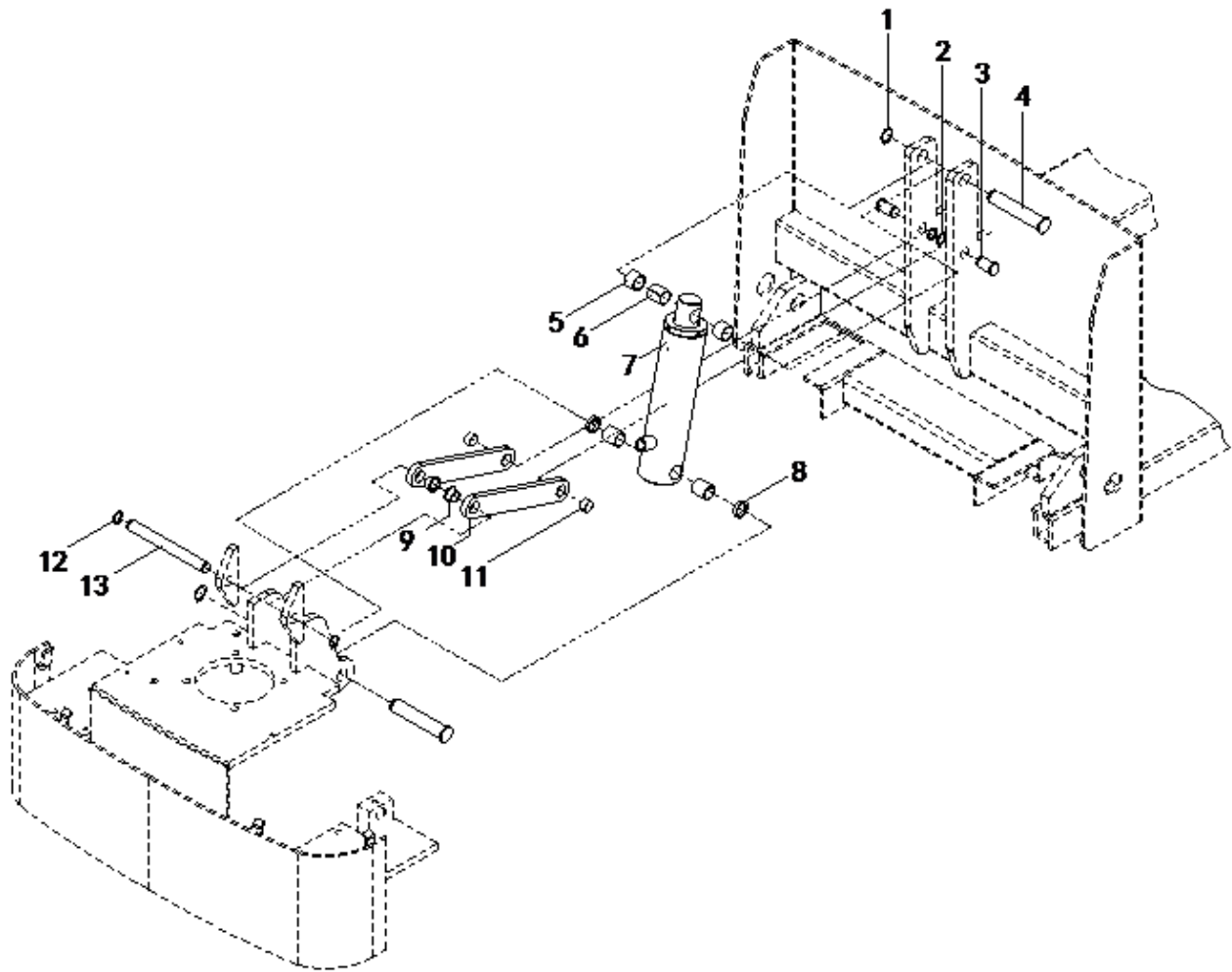
9.9 Driving Wheel Assembly

| Item | Part No | Description | Qty | Item | Part No | Description | Qty |
|------|---------|------------------|-----|------|---------|------------------|-----|
| 1 | 30401 | Bearing Cover | 1 | 16 | 30416 | Hub | 1 |
| 2 | 30402 | Retaining Ring | 1 | 17 | 30417 | Bushing | 1 |
| 3 | 30403 | Bearing | 2 | 18 | 30418 | Bearing | 1 |
| 4 | 30404 | Straight Key | 1 | 19 | 30419 | Screw | 3 |
| 5 | 30405 | Pinion Gear | 1 | 20 | 30420 | Straight Key | 1 |
| 6 | 30406 | Gasket | 1 | 21 | 30421 | Straight Key | 1 |
| 7 | 30407 | Speed Gear | 1 | 22 | 30422 | Retaining Ring | 1 |
| 8 | 30408 | Housing | 1 | 23 | 30423 | Motor Ring | 1 |
| 9 | 30409 | Gasket | 1 | 24 | 30424 | Oil Seal | 1 |
| 10 | 30410 | Crown Gear | 1 | 25 | 30425 | Retaining Ring | 1 |
| 11 | 30411 | Bearing | 1 | 26 | 30426 | Motor Shaft Gear | 1 |
| 12 | 30412 | Dustproof Nut | 1 | 27 | 230901 | DC Motor | 1 |
| 13 | 30413 | Brake Guard Ring | 1 | 28 | 30428 | Driving Wheel | 1 |
| 14 | 30414 | Electric Brake | 1 | 29 | 30429 | Pin | 2 |
| 15 | 30415 | Retaining Ring | 1 | 30 | 30430 | Screw | 10 |



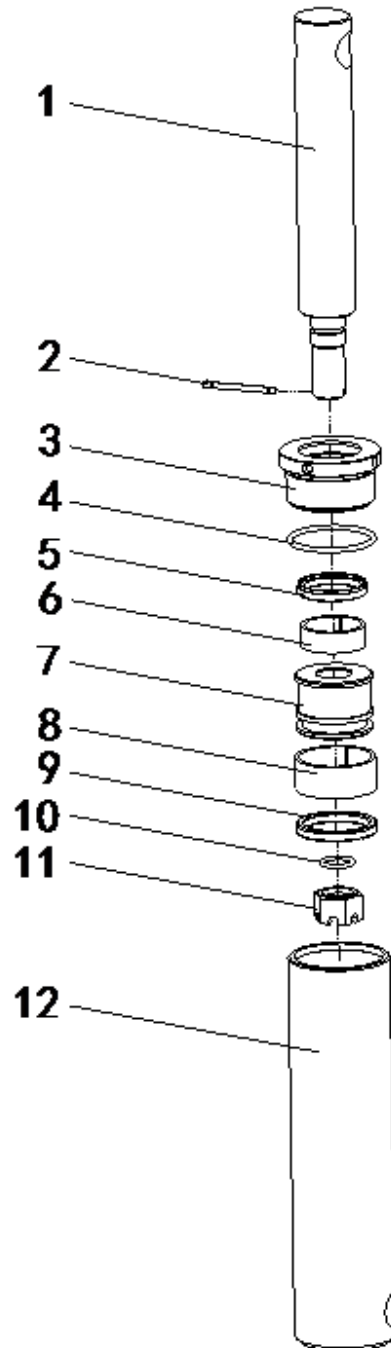
9.10 Cylinder Assembling Unit

| Item | Part No | Description | Qty | Item | Part No | Description | Qty |
|------|---------|-------------------|-----|------|---------|------------------|-----|
| 1 | 231001 | Spring Washer | 2 | 8 | 231008 | Retaining Ring | 2 |
| 2 | 231002 | Retaining Ring | 2 | 9 | 231009 | Composite Sleeve | 2 |
| 3 | 231003 | Pin Shaft | 2 | 10 | 231010 | Joint Plate | 2 |
| 4 | 231004 | Pin Shaft | 2 | 11 | 231011 | Composite Sleeve | 2 |
| 5 | 231005 | Retaining Ring | 2 | 12 | 231012 | Spring Washer | 1 |
| 6 | 231006 | Composite Sleeve | 3 | 13 | 231013 | Pin For Cylinder | 1 |
| 7 | 11.10 | Cylinder Assembly | 1 | | | | |



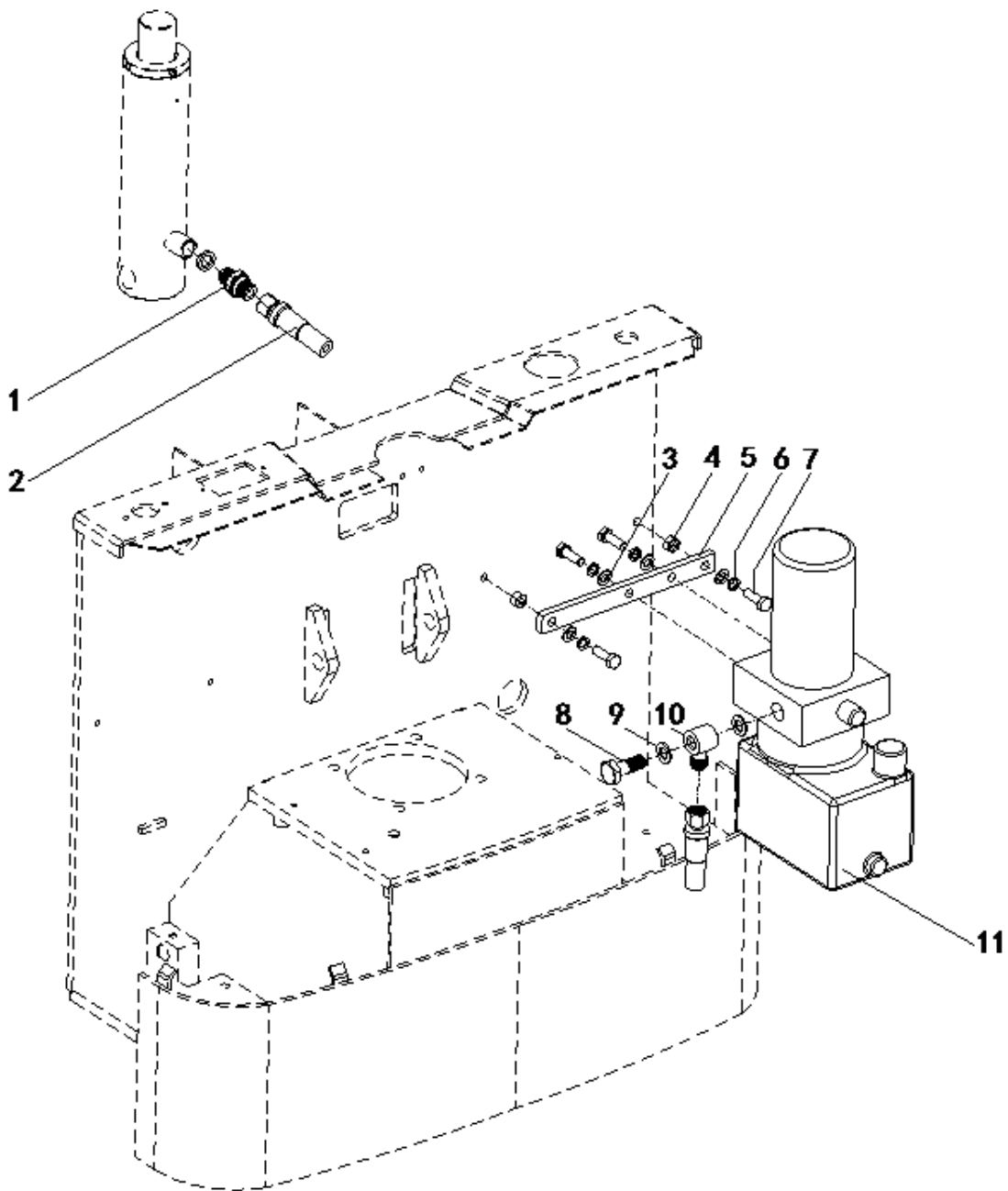
9.11 Cylinder Assembly

| Item | Part No | Description | Qty | Item | Part No | Description | Qty |
|------|---------|--------------|-----|------|---------|-------------|-----|
| 1 | 231101 | Piston Rod | 1 | 7 | 231106 | Piston | 1 |
| 2 | 231101 | Split Pin | 1 | 8 | 231107 | Wear Ring | 1 |
| 3 | 231102 | Cylinder Cap | 1 | 9 | 231108 | Oil Seal | 1 |
| 4 | 231103 | O Ring | 1 | 10 | 231109 | O Ring | 1 |
| 5 | 231104 | Oil Seal | 1 | 11 | 231110 | Nut | 1 |
| 6 | 231105 | Guiding Ring | 1 | 12 | 231111 | Cylinder | 1 |



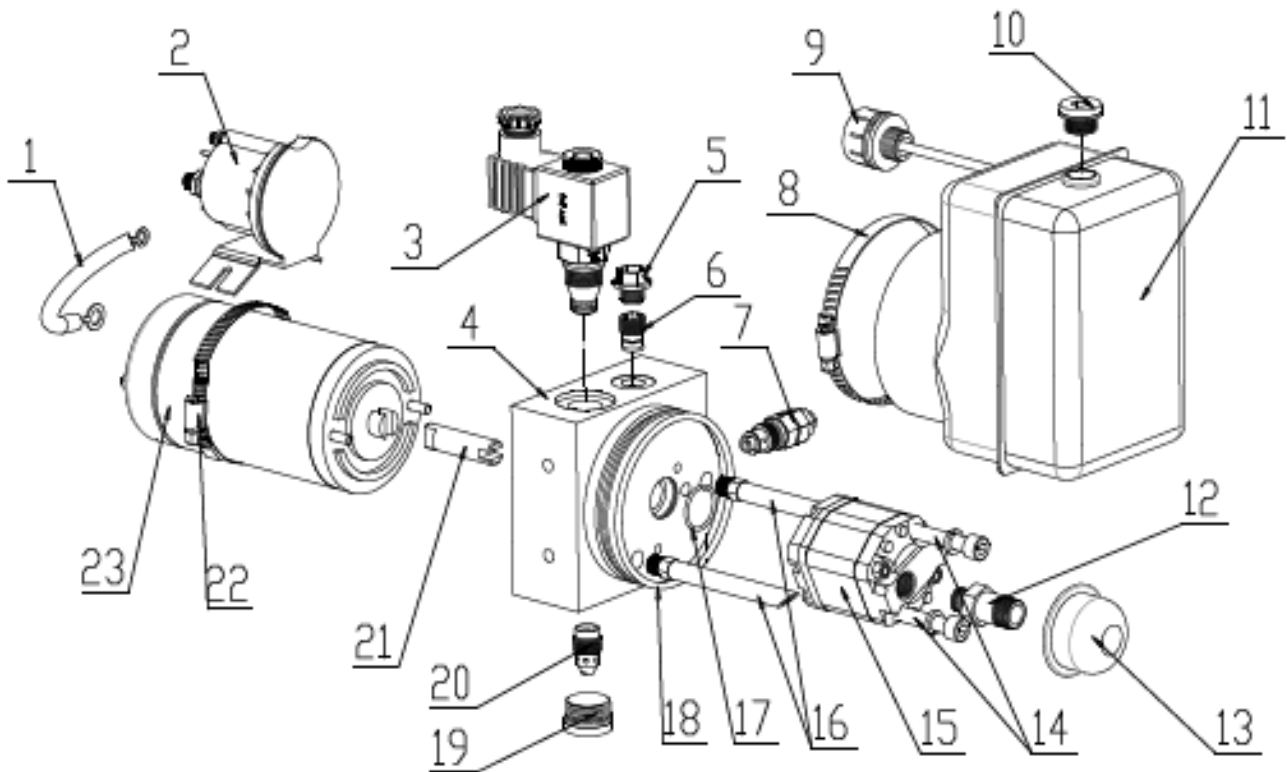
9.12 Hydraulic System

| Item | Part No | Description | Qty | Item | Part No | Description | Qty |
|------|---------|----------------|-----|------|---------|----------------------|-----|
| 1 | 231201 | Oil Pipe Joint | 1 | 7 | 231207 | Bolt | 4 |
| 2 | 231202 | Oil Pipe | 1 | 8 | 11408 | Oil Bolt | 1 |
| 3 | 231203 | Washer | 4 | 9 | 11407 | Seal Washer | 3 |
| 4 | 231204 | Nut | 2 | 10 | 11406 | Oil Pipe Joint | 1 |
| 5 | 231205 | Pump Base | 1 | 11 | 231208 | Hydraulic Power Unit | 1 |
| 6 | 231206 | Spring Washer | 4 | | | | |



231208 Hydraulic Power Unit

| Item | Part No | Description | Qty | Item | Part No | Description | Qty |
|------|----------|-----------------------|-----|------|----------|--------------------|-----|
| 1 | 23120801 | Connecting wire | 1 | 13 | 23120813 | Filter | 1 |
| 2 | 23120802 | Motor contactor | 1 | 14 | 23120814 | Bolt | 2 |
| 3 | 23120803 | Electromagnetic valve | 1 | 15 | 23120815 | Gear pump | 1 |
| 4 | 23120804 | Valve block | 1 | 16 | 23120816 | Oil return tube | 2 |
| 5 | 23120805 | Jam | 1 | 17 | 23120817 | O ring | 1 |
| 6 | 23120806 | One way valve | 1 | 18 | 23120818 | O ring | 1 |
| 7 | 23120807 | Relief valve | 1 | 19 | 23120819 | End cap | 1 |
| 8 | 23120808 | Clamp | 1 | 20 | 23120820 | Compensation valve | 1 |
| 9 | 23120809 | Oil tank cap | 1 | 21 | 23120821 | Coupling shaft | 1 |
| 10 | 23120810 | Tank inlet cap | 1 | 22 | 23120822 | Clamp | 1 |
| 11 | 23120811 | Oil tank | 1 | 23 | 23120823 | Motor | 1 |
| 12 | 23120812 | Oil absorption tube | 1 | | | | |



9.13 Control Wire

| Item | Part No | Description | Qty |
|------|---------|------------------------|-----|
| 1 | 231301 | Main control wire unit | 1 |
| 2 | 231302 | Control wire unit | 1 |

